



12.31.2021 WEEKLY CONNECTION

Early Learning Program E-Newsletter

A MESSAGE FROM THE DIRECTOR

...After 21 Comes 22...

As the year comes to an end, many of us are hard at work accomplishing goals that were set earlier, as well as our current projects. We have been busy supporting Early Learning systems, educators, administrators, and families to best support our nation's youngest learners. However, it is also the time to pause and reflect on what we want to accomplish in the new year as we await 2022 with a sense of excitement and hopefulness. We will be taking this time to think of new ways that we can continue carrying out our mission for young children and their families into the next year. We hope you will be able to do the same.



Enjoy reading the rest of the newsletter to find out about recent developments and resources to support our youngest learners, as well as their teachers, caregivers, and families.

Thank you, as always, for reading the Weekly Connection and we wish you a happy new year!

Leanna Lorden

Director of Children's Programs



Why the Term "Day-Care" is Bothersome to Early Childhood Professionals

People often refer to out-of-home care for their child as "daycare". This may be a fitting term if the establishment is more of a babysitting service, but for other centers this term is more than likely offensive and here's why. Putting the word "day" in front of this phrase emphasizes the day rather than the care that is provided. It can seem diminishing to those early childhood professionals who work so hard to put quality learning experiences forth and encourage growth in your children.

Early childhood educators represent the field in which early development is the focus and elementary readiness is the goal before departure. These educators come equipped with a college education, knowledge, and background in this field.

They work toward establishing fundamentals for children that encourage growth in math and science concepts, number and letter recognition, understanding and labeling emotions and self-regulation strategies. This creates a healthy foundation that can assist children as they grow older and continue to learn and develop in the world.

One way to show your providers you place value on the care and education they provide for your child is to refer to them as; (an) early learning center, early learning facility, or early childhood education center.

Jess Webb

Assistant Director of the Early Learning Program

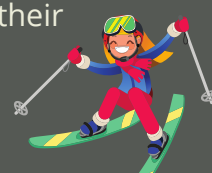


Pats Peak Learn to Ski & Ride Program

With winter in full effect, the WBC Kickstart classroom will soon be participating in the Pats Peak Learn to Ski and Ride Program!

The class will meet, have breakfast, and get ready at White Birch, and then take the bus over to Pats Peak. The program consists of hour long lessons beginning Jan. 4, 2022 and will continue every Tuesday until Feb. 1st.

We are excited to engage in a program that provides a fun way for students to learn a new winter sport. Through the process of learning how to ski, students strengthen their problem solving skills, social skills, as well as boost their confidence overall.



Ideas From The Kitchen

Food for Thought

Welcome to MyPlate.gov! This is an informative website created by the USDA that serves as a great resource to help support healthy eating habits for our children's growth and development. This image is an example of what is recommended for the proper proportions a child should have in a meal.

Click the blue button below to explore different diet plate printouts that can be used at home.

Jessica Thompson
Kitchen Manager

[MyPlate.gov](#)

MyPlate.gov

Staff Highlights

Kylie Tuttle

Kylie joined the White Birch Team in the summer of 2021. Kylie has been in the field of early childhood for several years and looks forward to continuing her education with the support of WBC. Kylie loves animals and has enjoyed horseback riding for most of her life.

